

**LEGEND**

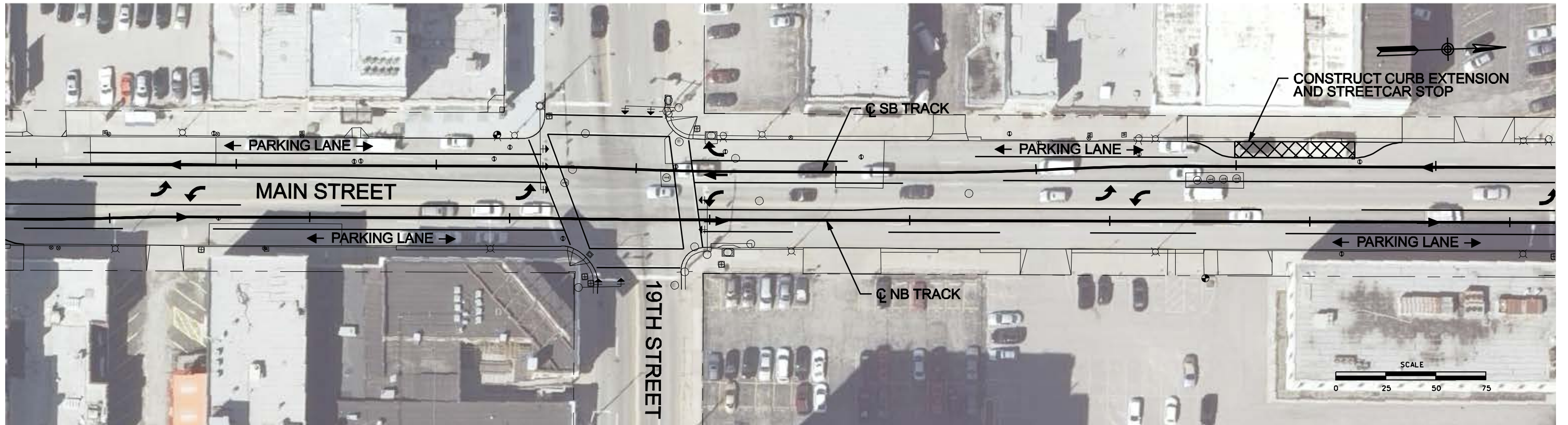
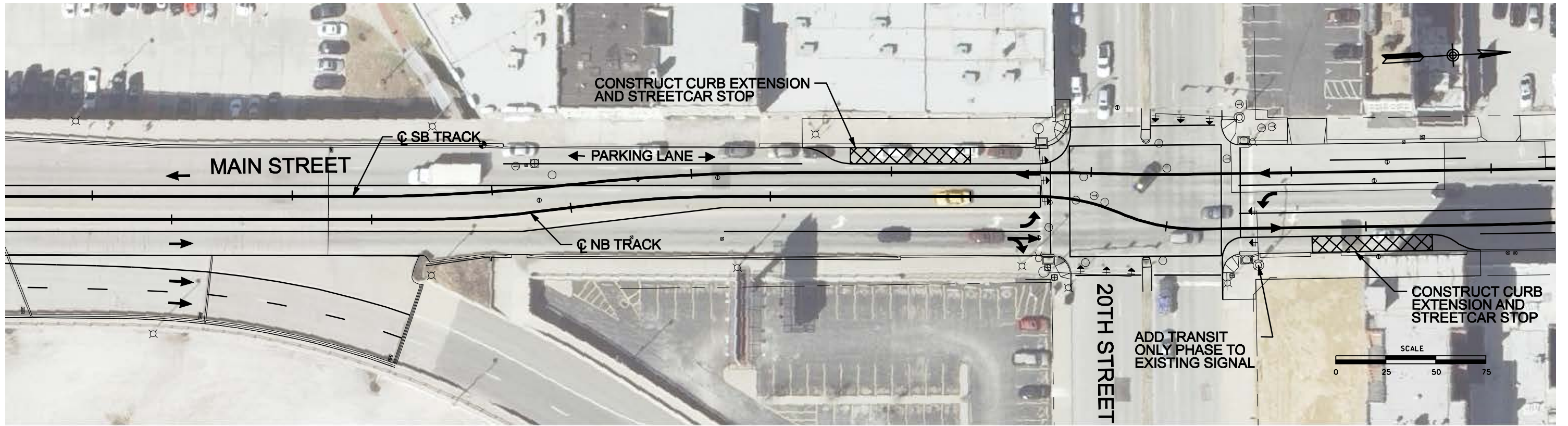
- PROPOSED STREET-RUNNING ALIGNMENT
- PROPOSED LANE MARKINGS/CURB IMPROVEMENTS
- POTENTIAL STREETCAR STATION AREA
- EXISTING CURB



**DOWNTOWN CORRIDOR ALTERNATIVES ANALYSIS**

**DRAFT**  
 CONCEPTUAL ALIGNMENT  
 PERSHING ROAD TO 20th STREET

**SHEET**  
 1  
 OF  
 10



**LEGEND**

- PROPOSED STREET-RUNNING ALIGNMENT
- PROPOSED LANE MARKINGS/CURB IMPROVEMENTS
- EXISTING CURB
- POTENTIAL STREETCAR STATION AREA

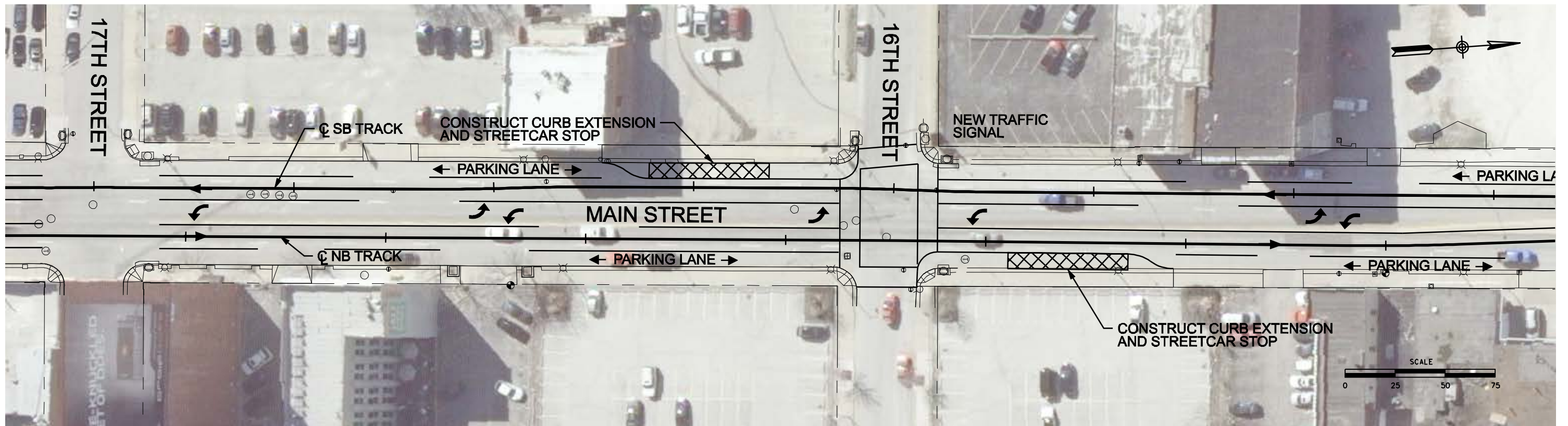
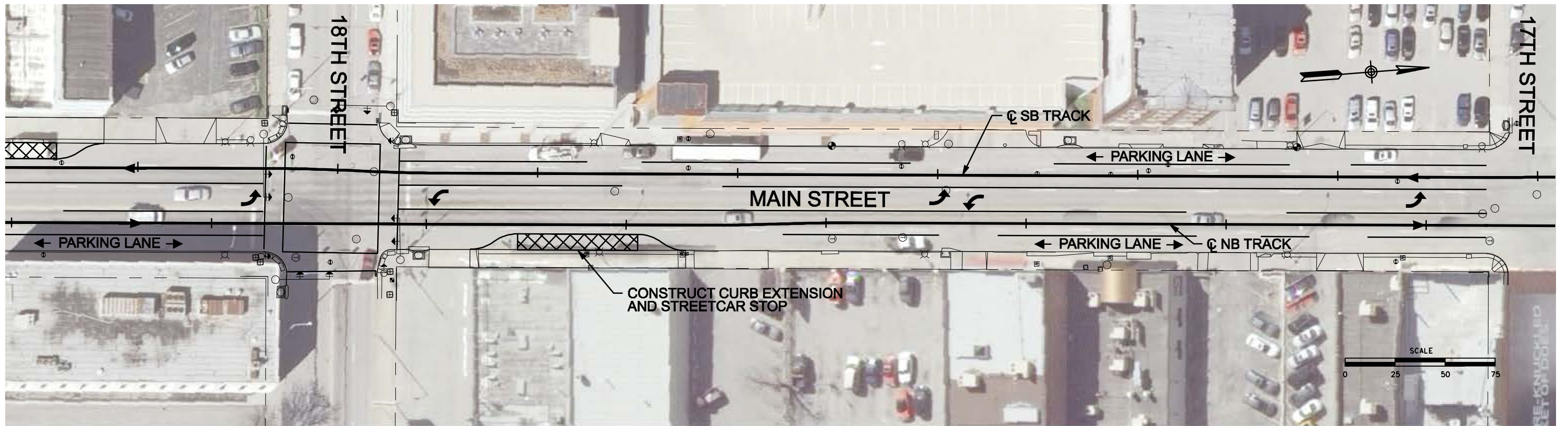


**DOWNTOWN CORRIDOR ALTERNATIVES ANALYSIS**

**DRAFT**

CONCEPTUAL ALIGNMENT  
20th STREET TO 19th STREET

SHEET  
2  
OF  
10



**LEGEND**

- PROPOSED STREET-RUNNING ALIGNMENT
- PROPOSED LANE MARKINGS/CURB IMPROVEMENTS
- EXISTING CURB
- POTENTIAL STREETCAR STATION AREA

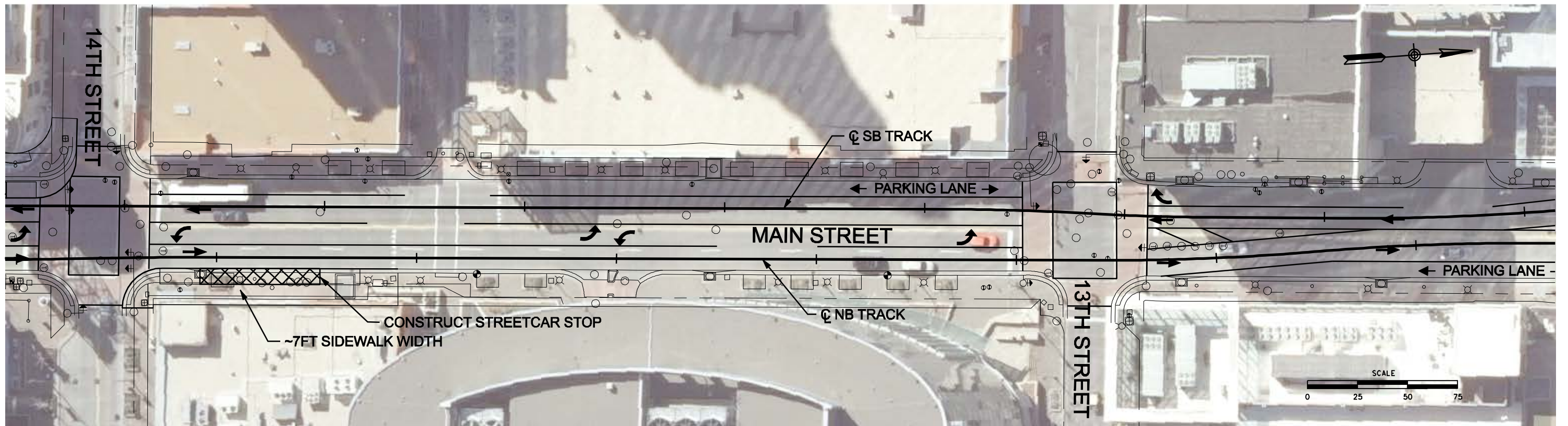
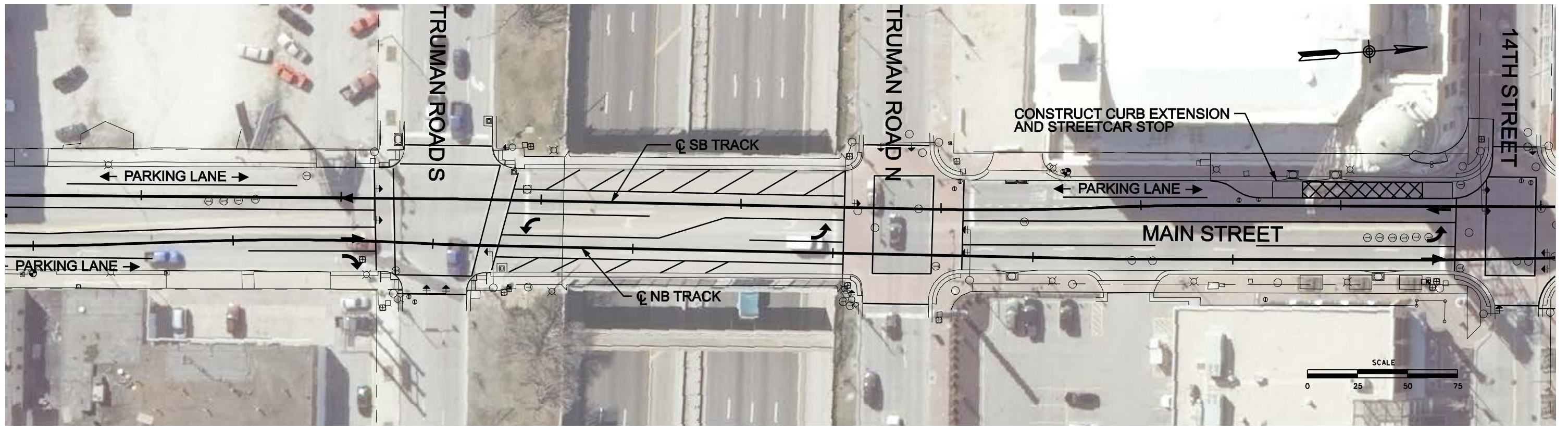


**DOWNTOWN CORRIDOR ALTERNATIVES ANALYSIS**

**DRAFT**

CONCEPTUAL ALIGNMENT  
18th STREET TO 16th STREET

SHEET  
3  
OF  
10



**LEGEND**

- PROPOSED STREET-RUNNING ALIGNMENT
- PROPOSED LANE MARKINGS/CURB IMPROVEMENTS
- EXISTING CURB
- POTENTIAL STREETCAR STATION AREA



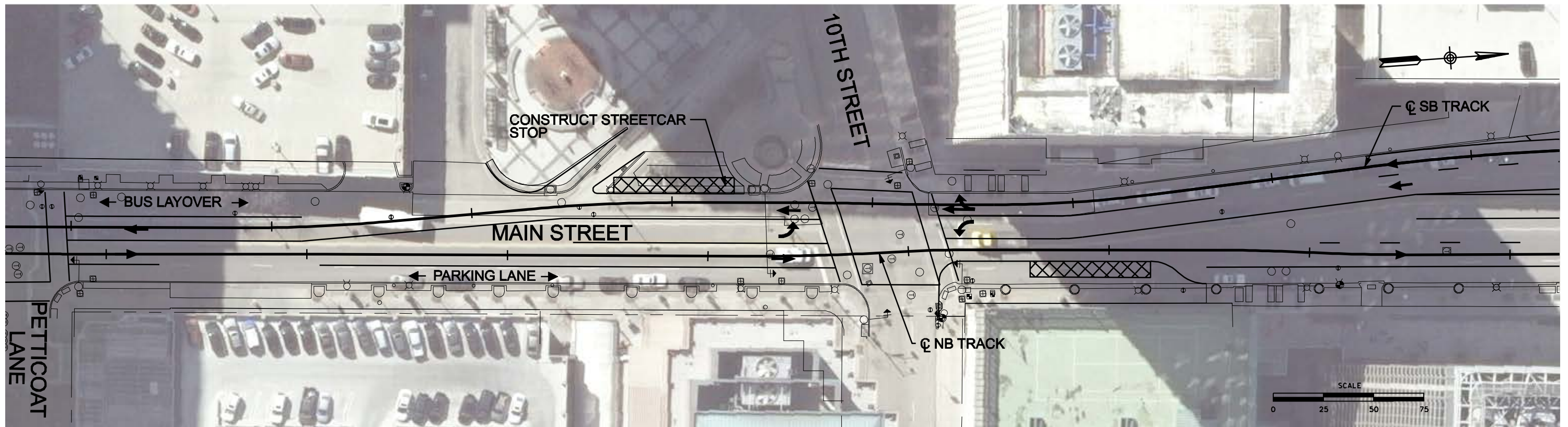
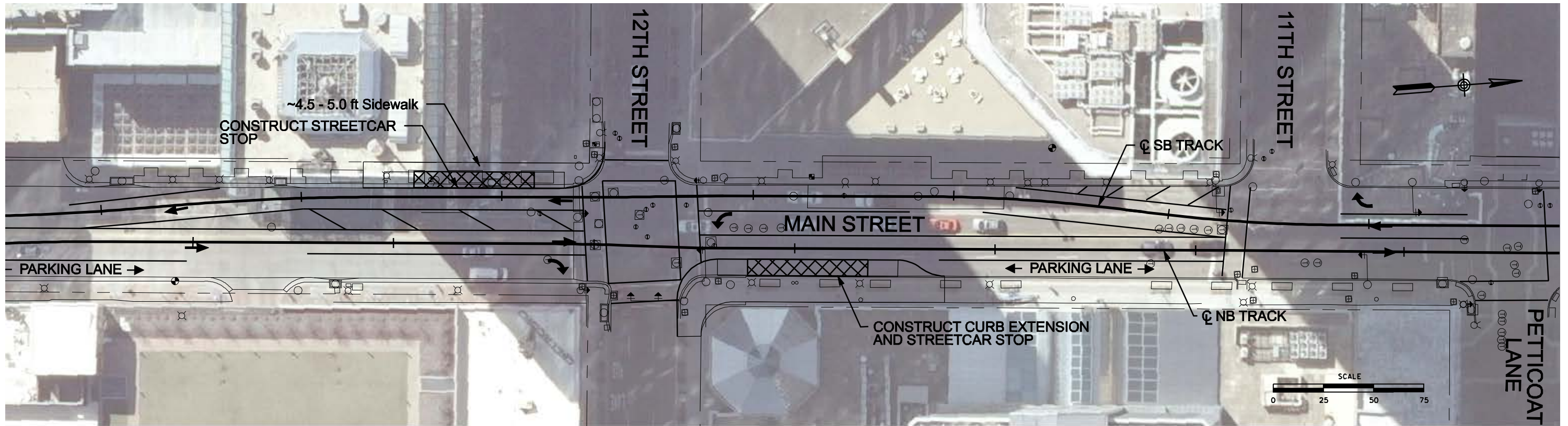
**DOWNTOWN CORRIDOR ALTERNATIVES ANALYSIS**

**DRAFT**

**CONCEPTUAL ALIGNMENT**

**TRUMAN RD SOUTH TO 13th STREET**

**SHEET  
4  
OF  
10**



**LEGEND**

- PROPOSED STREET-RUNNING ALIGNMENT
- PROPOSED LANE MARKINGS/CURB IMPROVEMENTS
- EXISTING CURB
- POTENTIAL STREETCAR STATION AREA

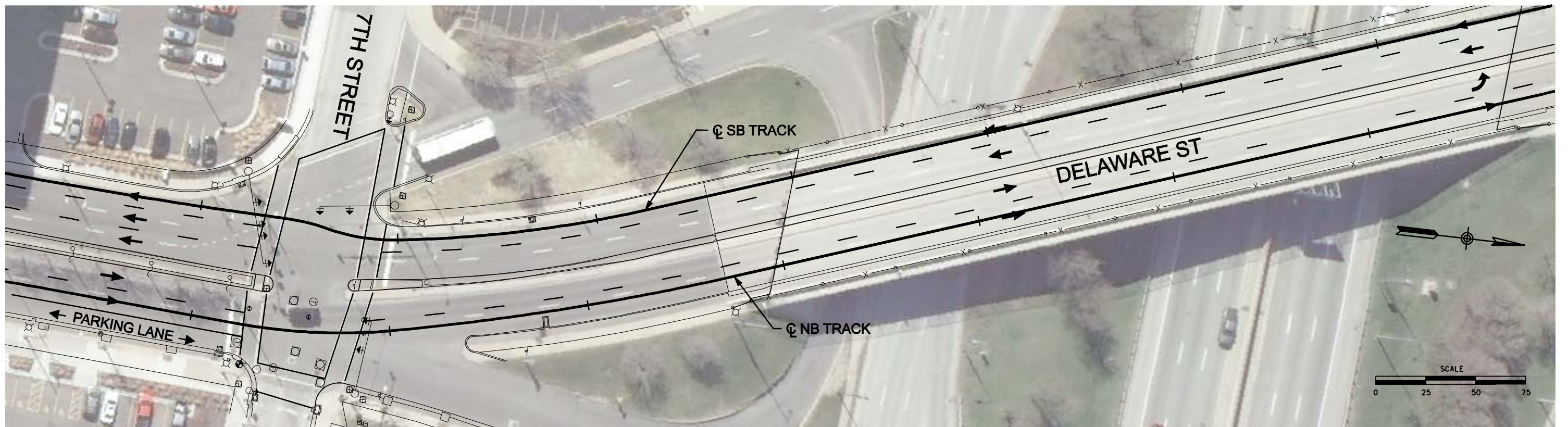
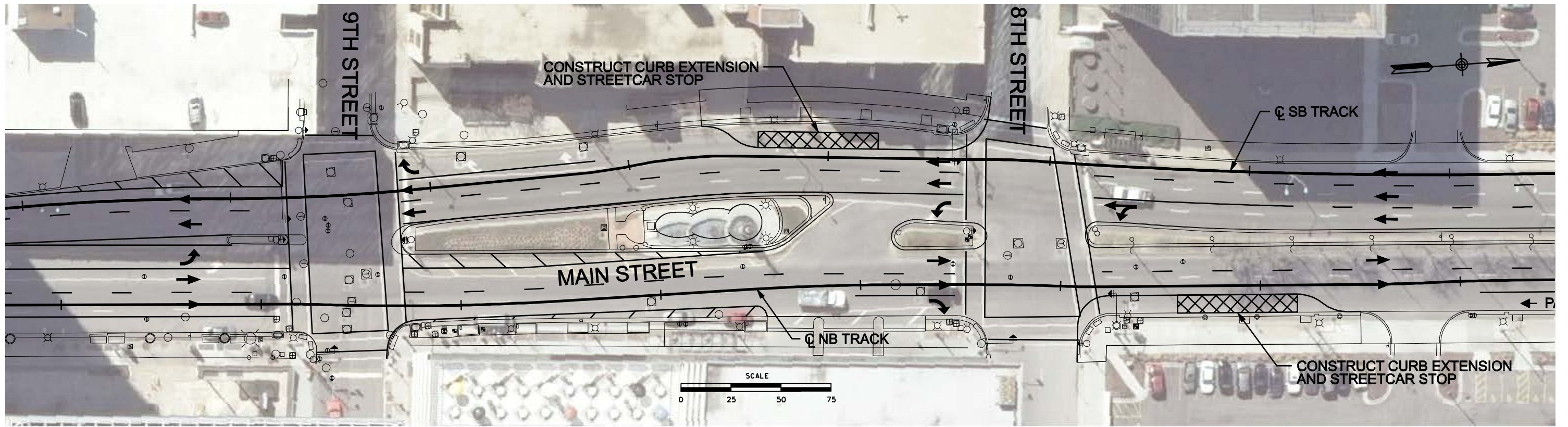


**DOWNTOWN CORRIDOR ALTERNATIVES ANALYSIS**

**DRAFT**

CONCEPTUAL ALIGNMENT  
12th STREET TO 10th STREET

**SHEET**  
5  
OF  
10



**LEGEND**

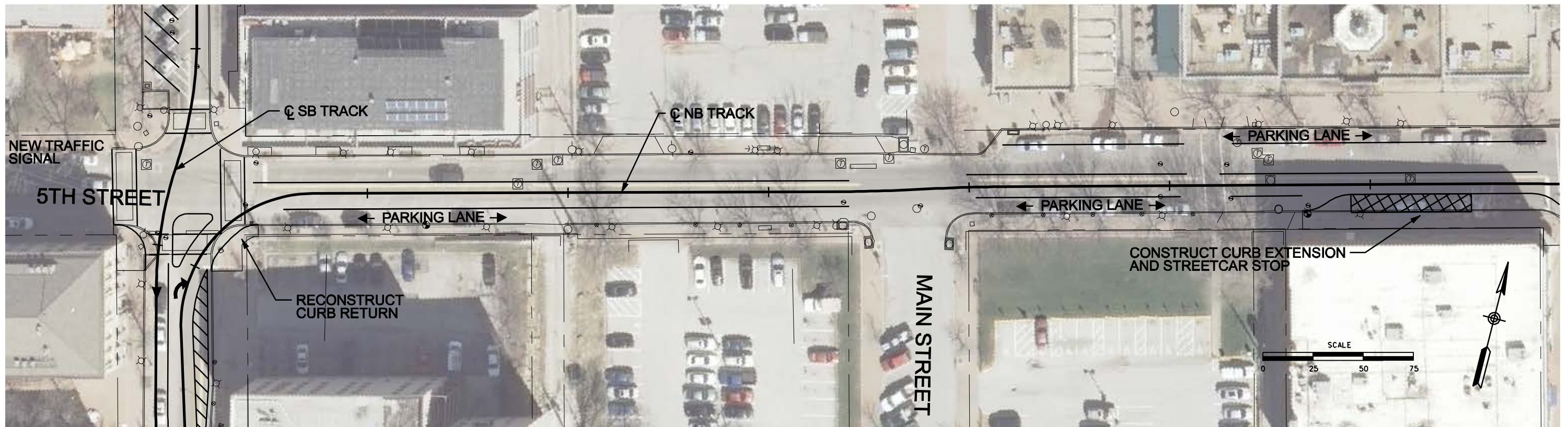
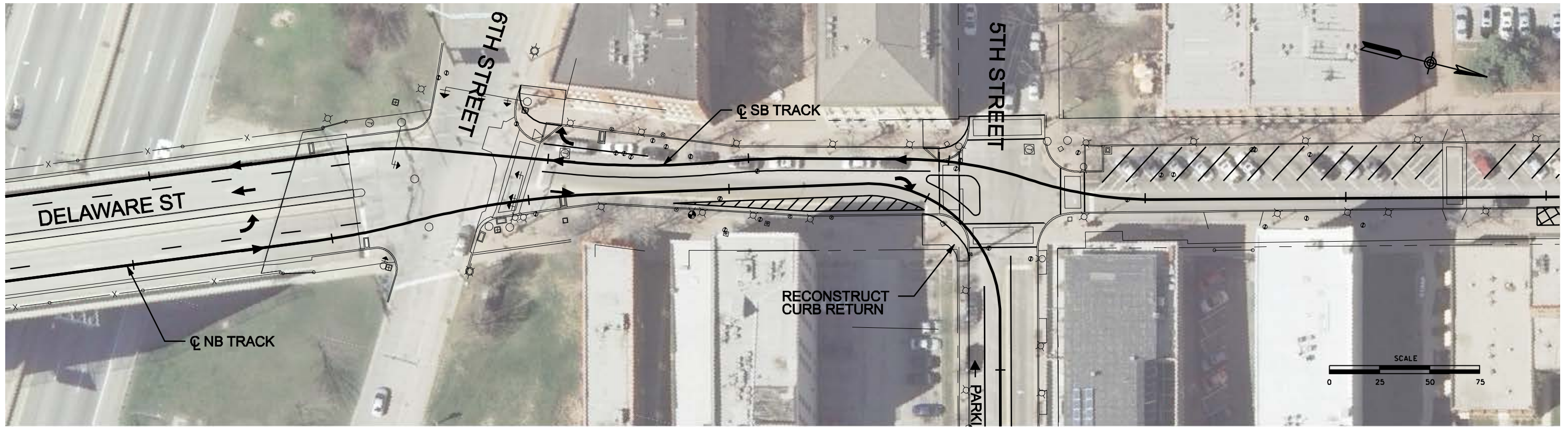
- PROPOSED STREET-RUNNING ALIGNMENT
- PROPOSED LANE MARKINGS/CURB IMPROVEMENTS
- EXISTING CURB
- POTENTIAL STREETCAR STATION AREA



**DOWNTOWN CORRIDOR ALTERNATIVES ANALYSIS**

**DRAFT**  
 CONCEPTUAL ALIGNMENT  
 9th STREET TO I-70

**SHEET**  
**6**  
**OF**  
**10**



**LEGEND**

- PROPOSED STREET-RUNNING ALIGNMENT
- PROPOSED LANE MARKINGS/CURB IMPROVEMENTS
- EXISTING CURB
- POTENTIAL STREETCAR STATION AREA

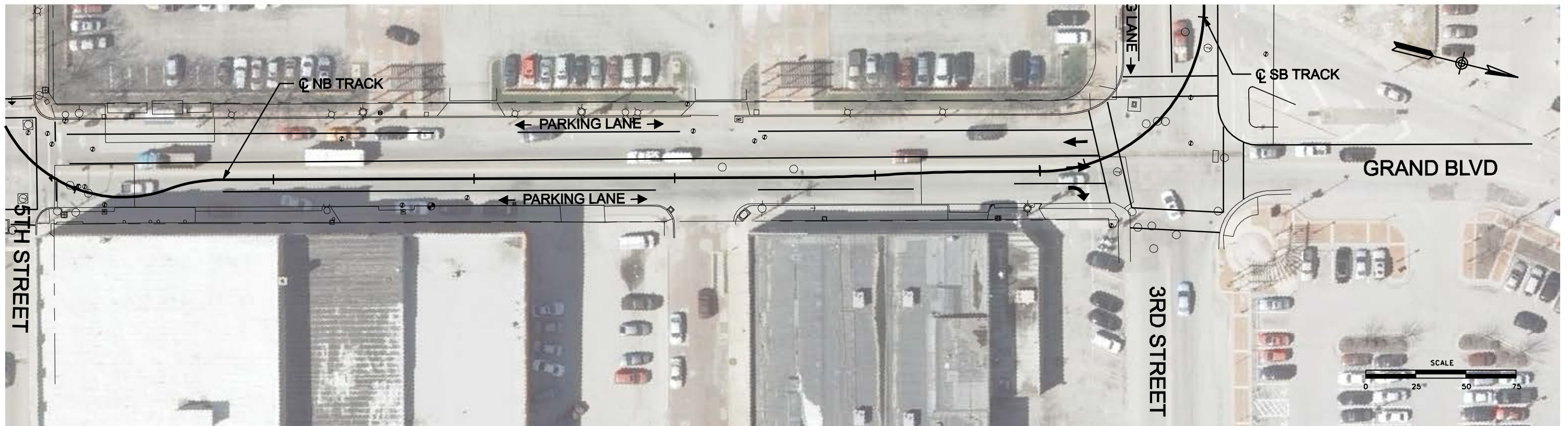
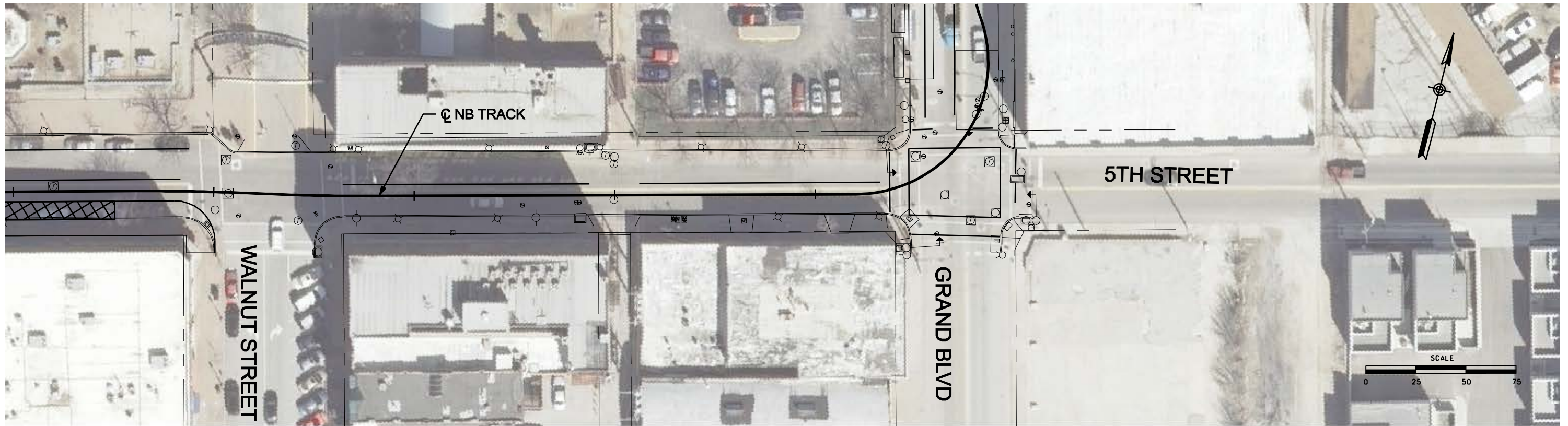


**DOWNTOWN CORRIDOR ALTERNATIVES ANALYSIS**

**DRAFT**

**CONCEPTUAL ALIGNMENT**  
**6th & DELAWARE STREET TO 3RD & DELAWARE STREET**  
**COUNTERCLOCKWISE ALTERNATIVE**

**SHEET**  
**7**  
**OF**  
**10**



**LEGEND**

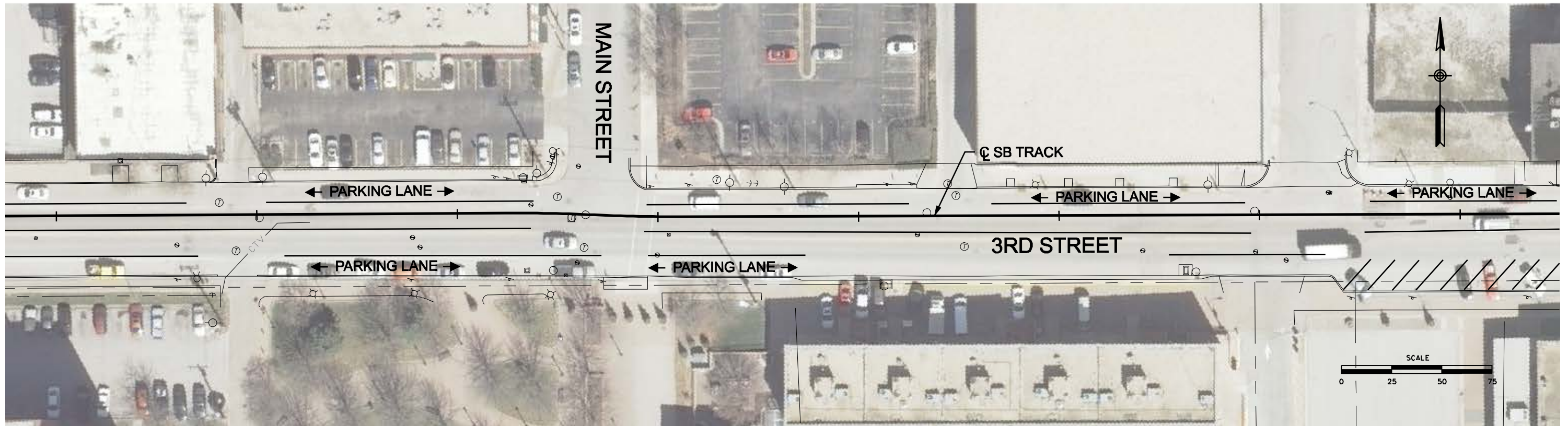
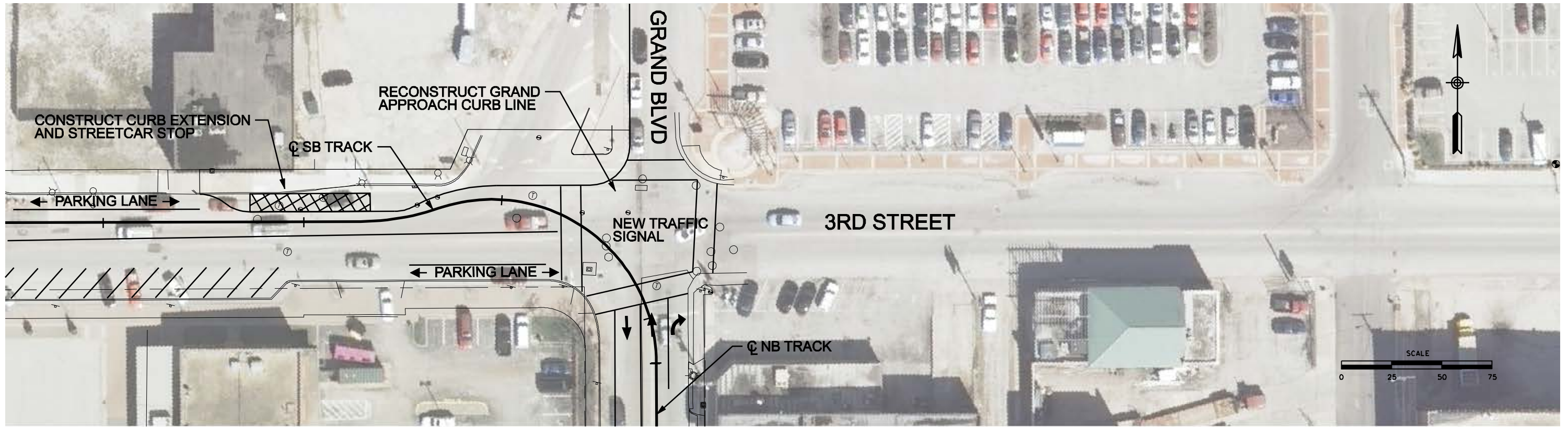
- PROPOSED STREET-RUNNING ALIGNMENT
- PROPOSED LANE MARKINGS/CURB IMPROVEMENTS
- POTENTIAL STREETCAR STATION AREA
- EXISTING CURB



**DOWNTOWN CORRIDOR ALTERNATIVES ANALYSIS**  
**DRAFT**  
 CONCEPTUAL ALIGNMENT  
 5th & WALNUT STREET TO 3rd & GRAND BOULEVARD

**SHEET**  
**8**  
**OF**  
**10**





**LEGEND**

- PROPOSED STREET-RUNNING ALIGNMENT
- PROPOSED LANE MARKINGS/CURB IMPROVEMENTS
- EXISTING CURB
- POTENTIAL STREETCAR STATION AREA

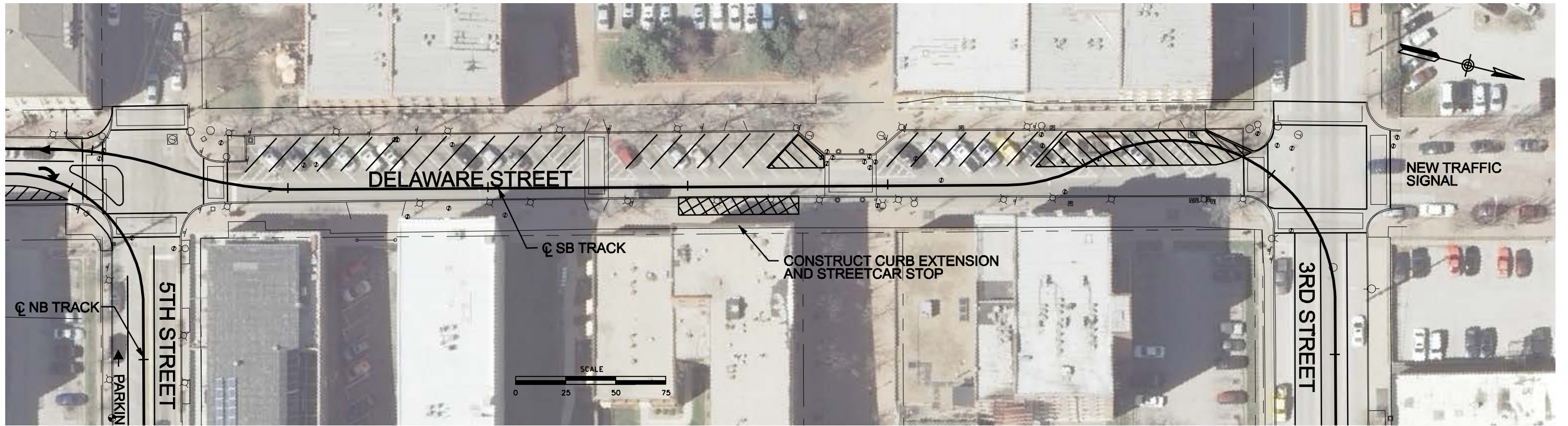


**DOWNTOWN CORRIDOR ALTERNATIVES ANALYSIS**

**DRAFT**

**CONCEPTUAL ALIGNMENT**  
3rd & GRAND BOULEVARD TO 3rd & DELAWARE STREET

**SHEET**  
**9**  
**OF**  
**10**



**LEGEND**

- PROPOSED STREET-RUNNING ALIGNMENT
- PROPOSED LANE MARKINGS/CURB IMPROVEMENTS
- EXISTING CURB
- POTENTIAL STREETCAR STATION AREA



**DOWNTOWN CORRIDOR ALTERNATIVES ANALYSIS**  
**DRAFT**  
 CONCEPTUAL ALIGNMENT  
 3rd & DELAWARE STREET TO 5th & DELAWARE

**SHEET**  
**10**  
**OF**  
**10**